



**TAVDental**  
PRECISION. PASSION. PARTNERSHIP

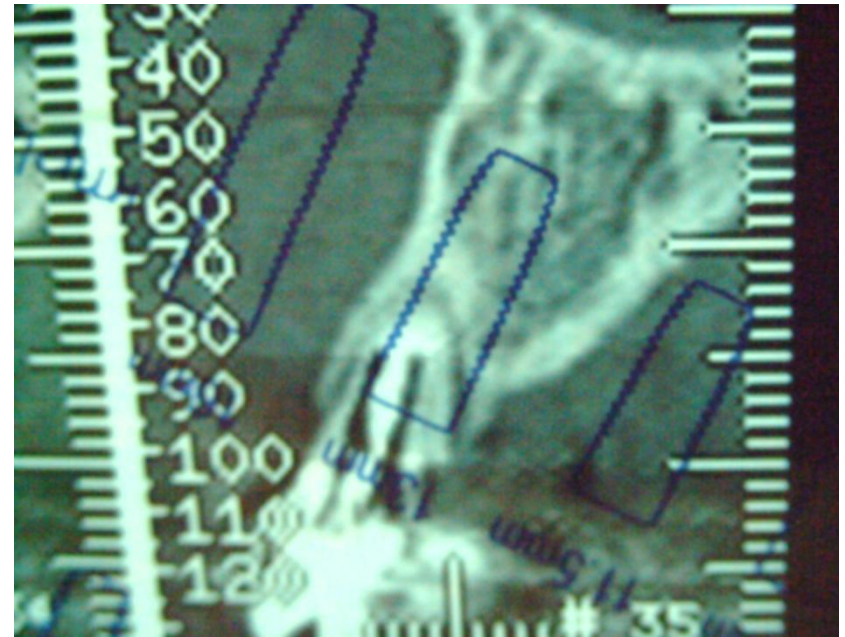
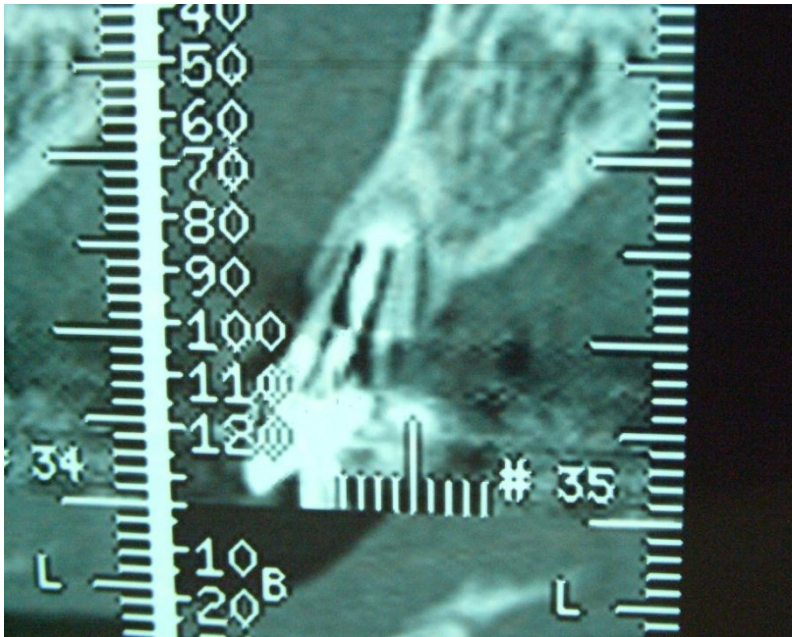
# Immediate loading after Extraction-Implantation

Case study No. 1

Dr. Frank Lasry, private practice, Paris, france

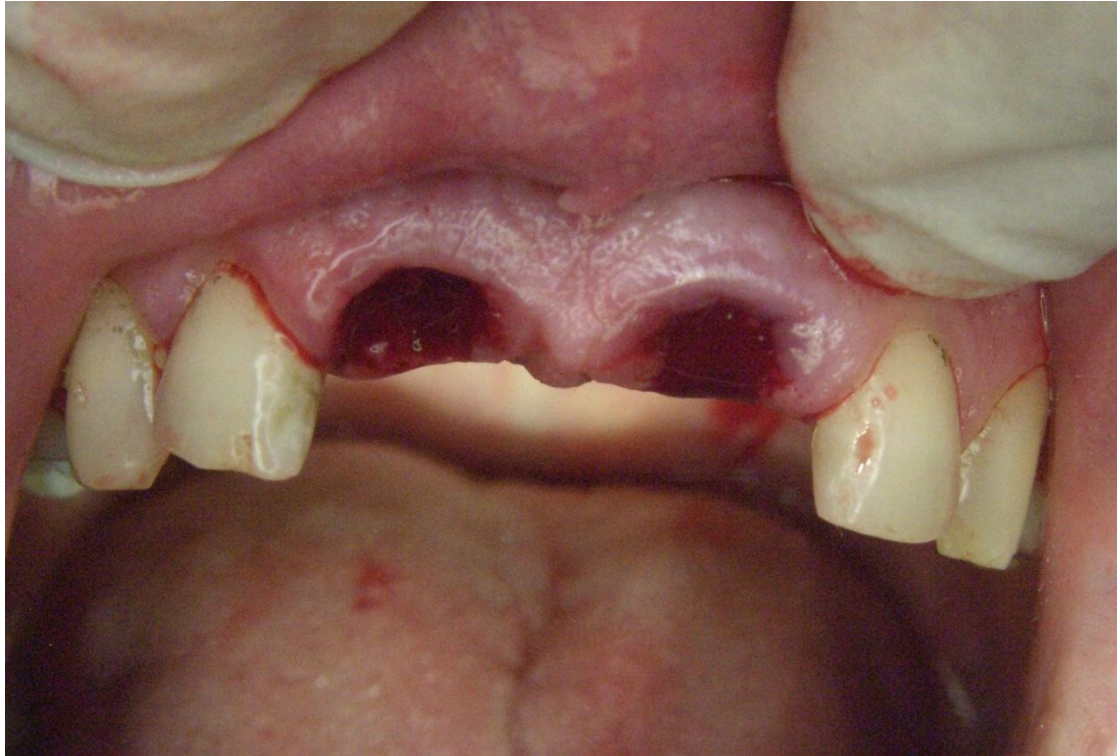
- MR F D , 32
- Central right and left replaced

# Central incisor fractured and periodontally lost



- Simulation of implant and verification of residual bone

# Two central incisors extracted with periotome



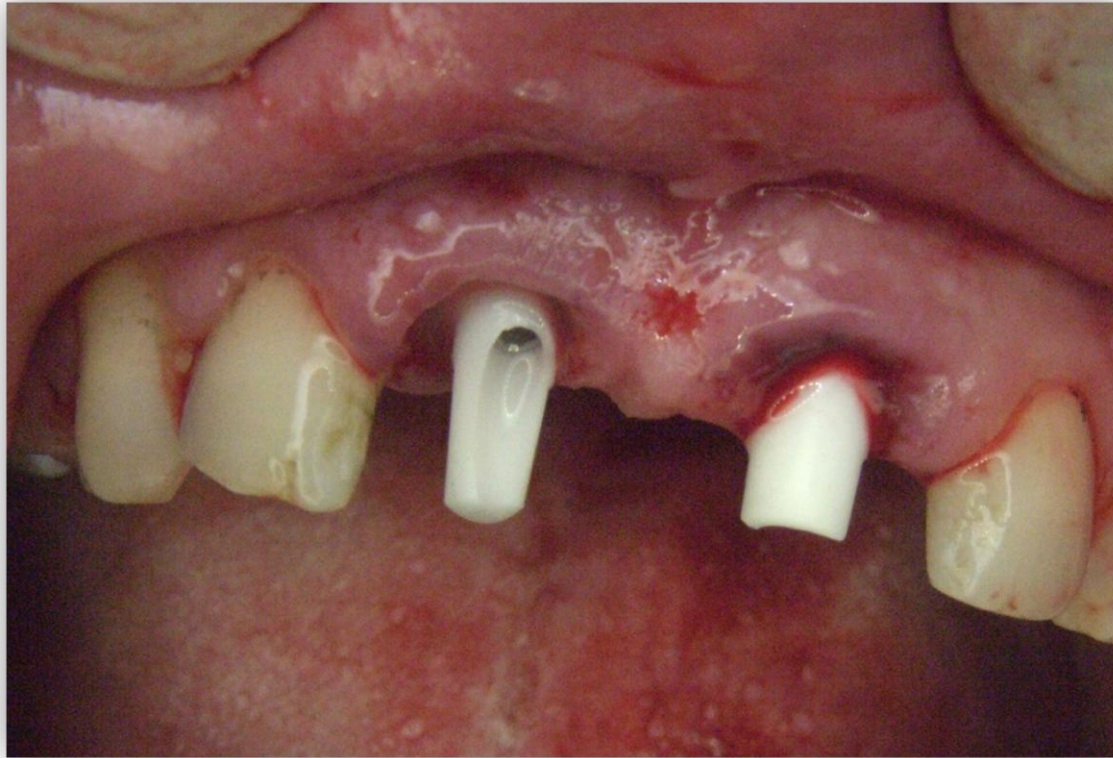


# Two dental implants are inserted



- Titanium post are used to drive implants in position after drilling sequence. They can be used as permanent post. In this case they are removed and replaced by TAV Dental Zirconium abutments

## TAV Dental Zirconium abutments are screwed with 32 Ncm torque



- Due to drilling sequence, related with roots axis, one angulated and one straight abutment are used

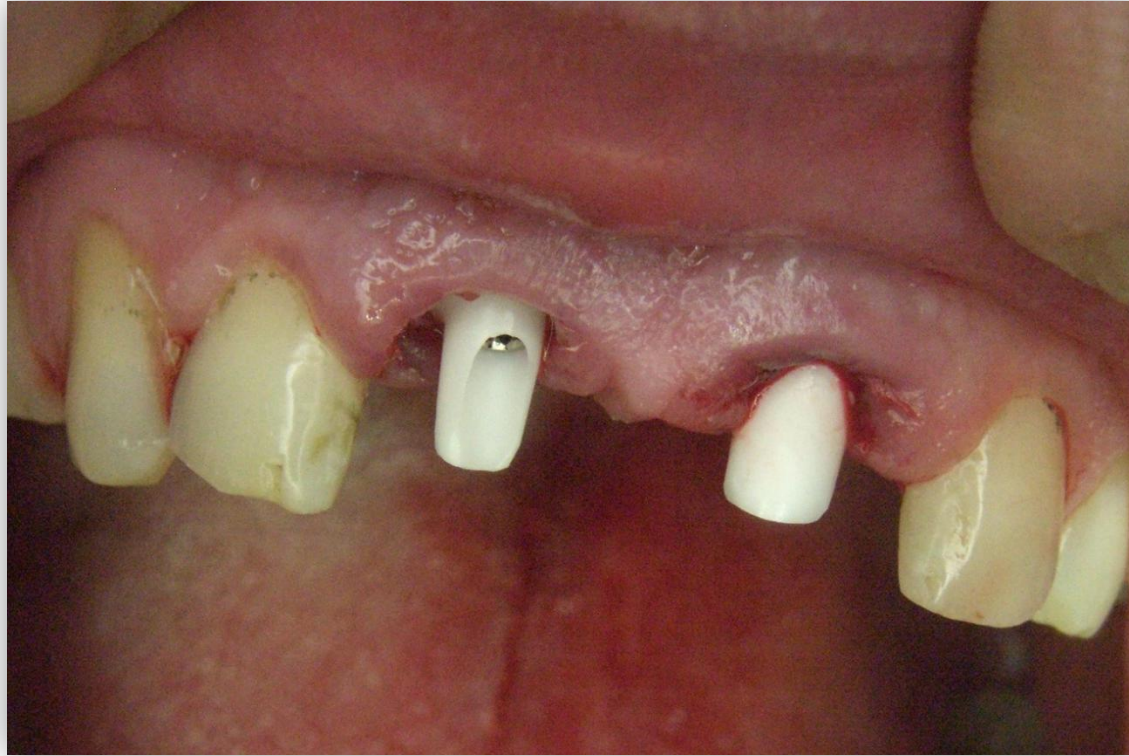
# TAV Dental 15° and straight abutment



- Special Diamond bur is given with each abutment to avoid pollution of zirconium



# Abutments are adjusted in position



- High speed micromotor and flushing is used to adjust shape and length

# Immediate esthetics with temporary crowns



- Due to emergency lab temps could not be done. Two Directa acrylic temp and self curing resin are used. diastema was a special request from the patient



# Occusal/palatal view



- Great effort is taken to adjust cervical shape and polishing, to prevent periodontal problem. The crowns are NOT cemented to avoid cement irritation under gingiva